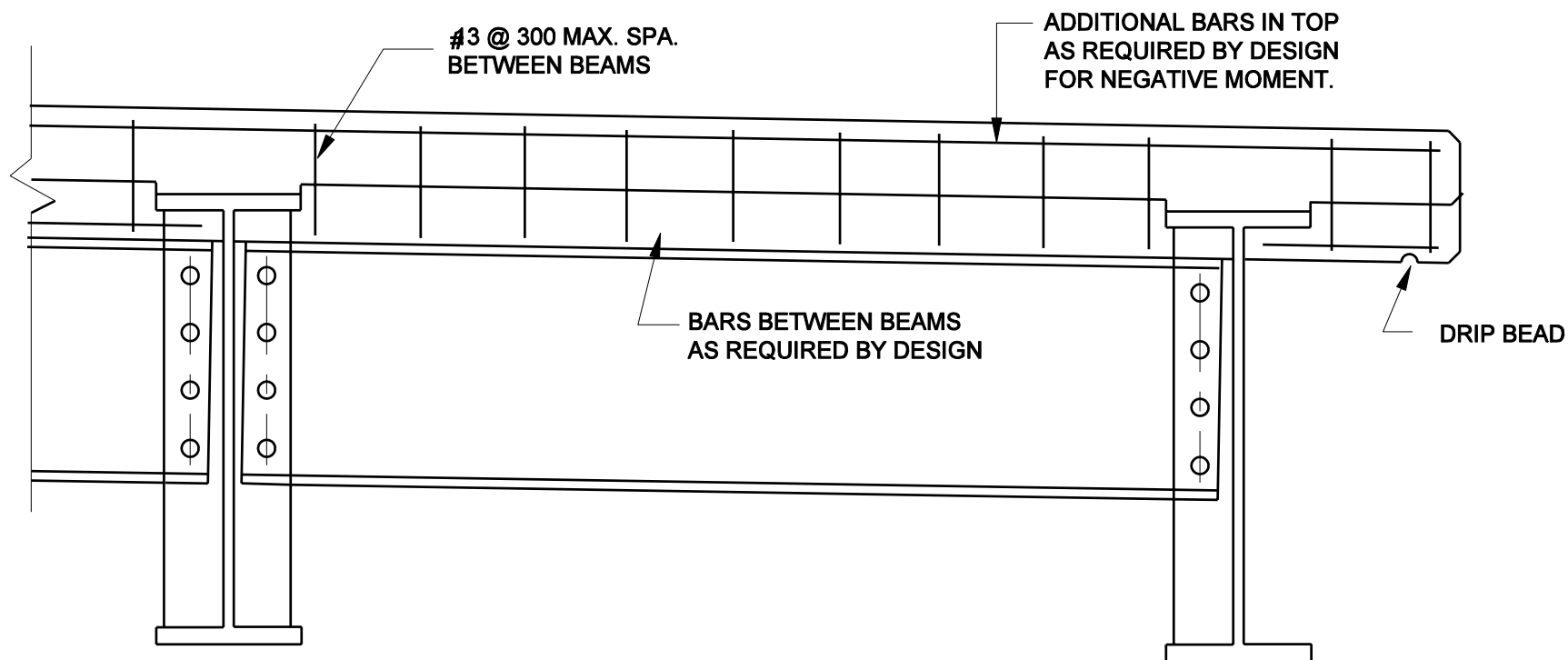


**SUGGESTED TRANSVERSE EDGE BEAM DETAILS  
(For Steel Plate Girders)**

Figure 61-5J

NOTE: ALL REINFORCING STEEL  
SHALL BE EPOXY COATED.

NOTE: THE EDGE BEAM SHALL EXTEND  
FROM COPING TO COPING.



### SUGGESTED TRANSVERSE EDGE BEAM DETAILS (For Steel Plate Girders)

Figure 61-5J  
(Continued)